

SUPPLIES

- * 1/8th yard of mohair
- Sample used 5/8" mohair
- 9"x9" square of pawpad fabric
- 6 - 1" discs for arms & neck, 4 - 1 1/4" discs for legs
- Jointing hardware of choice (cotterpins, bolts or screws)
- 8mm glass eyes (1 pair)
- Waxed floss - for eyes and closing head
- Pearle cotton (black) for nose & mouth
- Upholstery thread for closing seams
- Sewing thread to match fabric backing
- Fiberfil
- Pellets for weight... optional

Tools you will need

- Needlenose pliers
- Awl (or sharp chopstick)
for making holes for joints & eyes
- Stuffing Tool (end of wooden spoon is just fine)
- You can use whatever needles you are comfortable with but these are my favorites:
- Needle - #16 Milliners needles (for closing seams)
- Needle - 5" long doll needle (for eyes & hiding threads)
- Needle - 3" soft sculpture doll needle (for nose)
- Sewing machine optional as you can hand sew if desired

Copyright ©2009 Laura Lynn Matthews
www.TeddyBearAcademy.net

Teddy Bear Academy

**Teddy Bear Patterns &
Online Bear Making Classes**

www.TeddyBearAcademy.net



Sebastian

9" Teddy Bear Pattern



9" Sebastian

Artist Designed Teddy Bear Pattern
From www.TeddyBearAcademy.net
©Instructions & Pattern are copyrighted 2019

*The bear you make from this pattern
is not intended to be a child's toy due to the glass eyes and pellets.*

**Do you need a little help making your bear? I can SHOW you how with
online video classes at www.TeddyBearAcademy.net**

- 1) Trace pattern pieces onto paper, paste onto cardstock and cut out. A 3/8" seam allowance IS included. The triangles on the pattern are to help with matching the pieces. Do not sew into them.
* OR: Print out the pattern directly onto heavy paper or cardstock.
- 2) Lay pattern pieces on wrong side of your fabric. Be sure the arrows on the patterns run in the same direction as the direction of the fur.
- 3) Trace around each pattern with a permanent marker or gel pen. Be sure to mark all joint marks and seam openings.
- 4) Cut out your pieces. It is important to cut ONLY the backing of the fabric with a sharp, small scissors. Cut on the INSIDE of the lines. My scissors of choice for this are Fiskars Softouch Micro-Tip Scissors. They are awesome! Their "Softouch" design really does a good job to help keep my hands from getting sore.
- 5) As you first pin your pieces together, be sure to tuck all the fur to the inside. This will give you nice clean seams.

6) SEWING

BODY: Fur sides together, match up the right and left body pieces together, pin and sew. Leave an opening at the back to turn and stuff.

HEAD: Match 2 head side pieces together and sew the chin seam from the tip of the nose down to the neck opening. To insert the head gusset, match the line on the nose of the head gusset up to the seam of the 2 head sides. Tack in place at the seam. Pin the gusset in place then baste together with a whip stitch. Sew the gusset in place

ARMS: Match the paw pads up to the corresponding inner arms and sew with a 3/8" seam allowance. Match up the inner arms to the correct outer arms. Pin and sew.

LEGS: Match legs – be sure that each leg has one outside leg and one inner leg. The inner leg will have the joint marking. Pin and sew closed, making sure to leave the seam opening open – and also the bottom of the foot.

Insert the footpad: Match up the lines on the footpads to the seams on the feet. Tack in place. Pin the rest of the footpad in place, baste together with a whipstitch. Sew in place with a backstitch. (I have a great videos showing this technique and also the entire bear making process inside of www.TeddyBearAcademy.net)

EARS: Match up both pairs, sew from one corner, around the curve to the other corner. Leave the straight edge open.

7) STUFFING

ARMS: Start by stuffing the paw pad area. Next insert the joint assembly. Take your awl or sharpened chopstick and find the joint marking on the inside of the arm. Make an opening just large enough for your joint hardware to go thru. The disc will be on the inside of the arm.

Finish stuffing the arm and close the seam with a ladder stitch.

LEGS: Stuff the foot firmly. Assemble leg joint. Use your awl or sharpened chopstick, make an opening just large enough for your joint hardware to go thru and insert the joint. Finish stuffing the leg and close the seam with a ladder stitch.

Head

STUFFING

Start by stuffing the nose very firmly then stuff the rest of the head..

EMBROIDERING the NOSE

(I have a great videos showing this technique and also the entire bear making process inside of www.TeddyBearAcademy.net)

When I am doing a nose, I like to use the 3 inch needle... a good sharp one!

Start with a length of pearle cotton about 30" long. I prefer to use 2 shorter pieces than one long piece as I find the long pieces get knotted up too easily.

I enter the bear's nose thru the side, and don't pull the pearle cotton all the way thru, let a short tail hang out... don't put a knot in the end of the floss! Bring your needle up near a top corner of where you want your nose to be, and then outline the shape of the nose.

Now stitch the nose. I prefer to make vertical stitches, but you can do horizontal if you like. Those outline stitches will help you keep the nose nice and even.

When you come near the end of your strand – thread it onto your long 5" needle, and with your next stitch, go thru to the back of the neck on the other side of the head. Pull it nice and taut and snip the pearle cotton. Start your next piece the same way you started the first. When the nose is all done, carefully snip the beginning ends of the pearle cotton that you left hanging on his snout. Be sure to use a very sharp pair of scissors so you don't leave any pieces hanging..

He does not have a mouth yet... I prefer to do that after his neck is closed.

CLOSING THE NECK

Time to close up the neck.

Assemble your neck joint assembly. Sit the bear's head in your lap or on your table upside down so the opening is up. Set the assembled joint inside. Thread your waxed thread/floss on your 3" needle and sew a gathering stitch all around the neck opening. Leave a long tail to start and to end. Pull the ends tight and tie a square knot.

With each tail of the thread, do a running stitch around the neck joint, then tie another square knot. Sink the threads in.

THE MOUTH

I like to take another length of pearle cotton, and come up to the center of the nose from the lower back side of the head (near the neck joint) leaving a about 6" of the pearle cotton hanging out near the neck. I take that length and bring it thru also... going in thru the head just a small space away from the first place, but coming out at a different spot on the head where I then clip it away. This helps anchor the pearle cotton in place.

Now you can decide what shape mouth you would like to have. It may help to "outline" the mouth shape with some ball headed pins. Stitch the mouth and when you are done, bring the tail ends all the way thru the head near the same place you entered – and snip the ends.

The head is done for now.. I know he can't see or hear you yet... But it will be much easier to attach his eyes and ears when he is able to sit up on his own!

Jointing the Bear

(I have a great videos showing this technique and also the entire bear making process inside of www.TeddyBearAcademy.net)

Now he's really coming together! It's time to put all of your bear's parts and pieces together now. I like to start with the head. There is a small gap (marked on the inside) in the neck seam where his head joint will fit. I use my sharpened chopstick to GENTLY open this area up. I push it thru from the inside to out. I don't poke it all the way thru, I just want the point to come out to the fur side.

Take your jointed head, and slip the joint hardware thru the neck opening. Now turn the body slightly inside out, so you can slip the 2nd neck disc and 2nd large washer over the hardware that is now sticking into the inside of the bear's body. Now secure your joint. (turn the cotter pin, tighten the nut...)

I attach the arms next, ending with the legs. To attach the limbs, take your awl or chopstick and gently poke a hole (separate the threads) at the joint markings. Make an opening just large enough for each cotter pin or bolt to go thru. Attach the limb (Make sure it is facing in the correct direction!!). Now take limb disc & washer and slip them over the cotter pin or bolt on the inside of the body in the order listed. Now, tighten each joint on the inside to secure each limb to the body.

Now you have your bear all assembled and it's time to fill his tummy!

You can make your bear as firm or as squishy as you like, but it is easier for your bear to sit up if he is at least slightly firm. This is how I stuff my bears...

I usually add my pellets for weight. I prefer stainless steel bb's, but you could use plastic pellets, glass pellets,...)

Add fiberfill. I find it easier at this point to lay him on his tummy, face down. Keep adding fiberfill till he is the firmness you like. Don't forget to add fiberfill at his neck! This is an area that is very important so he can hold his head up. Close up his back with a ladder stitch.

You can now sit your teddy up to face you so that you can finish his face!

I like to do the eyes first, then the ears. It really does not matter, do it however you are comfortable.

The Eyes

(I have a great videos showing this technique and also the entire bear making process inside of www.TeddyBearAcademy.net)

To insert the eyes you will need: The pair of glass eyes, the pair of waxed eye floss strands (should all be in the same packet) 5" long needle, needle nose pliers, awl (or sharpened chopstick), ball headed straight pins.

First, fold each length of eye floss in half. Be sure each ½ is even. Now, loop end first, thread that thru the wire on each glass eye

Pull the loop a little bit thru the eye wires, now take the tail and pull it thru that loop:

Now pull the tails tightly, and you have tied the glass eye to the waxed floss securely.

Take a look at your bear... where do you want the eyes to be? Use your ball headed pins to help you place them. The common place is right where the forehead starts to slope up, just on the outside of the gusset seam. Be sure NOT to place them directly on the seam as that will weaken the head. Move the eyes (pins) away from and closer to the gusset to see which look pleases you best.

When you are ready to insert the eyes, first, thread the tails of the waxed floss from one of the eyes onto your 5" needle. Take your awl (or chopstick) and carefully poke a small hole (separate the threads of the backing) where one of your pins is located. Now, take your threaded 5" needled and insert it thru that hole, coming out down at the neck of your bear, on the opposite side of the eye. Do the same for the other eye
At the back of the bear now, separate the tails of the floss for one of the eyes. With one tail, take a small stitch so it is next to its other tail, but not in the same hole. Do the same for the other eye's floss tail.

Carefully tie one knot (just over once) and pull gently. Push gently on the eyes to help them sink in... but you don't want to pull too tightly and accidentally break the glass eyes! Pushing gently on the eyes helps sink the eyes without breaking them. Now go back to those floss tails and tie a square knot. Sink the ends

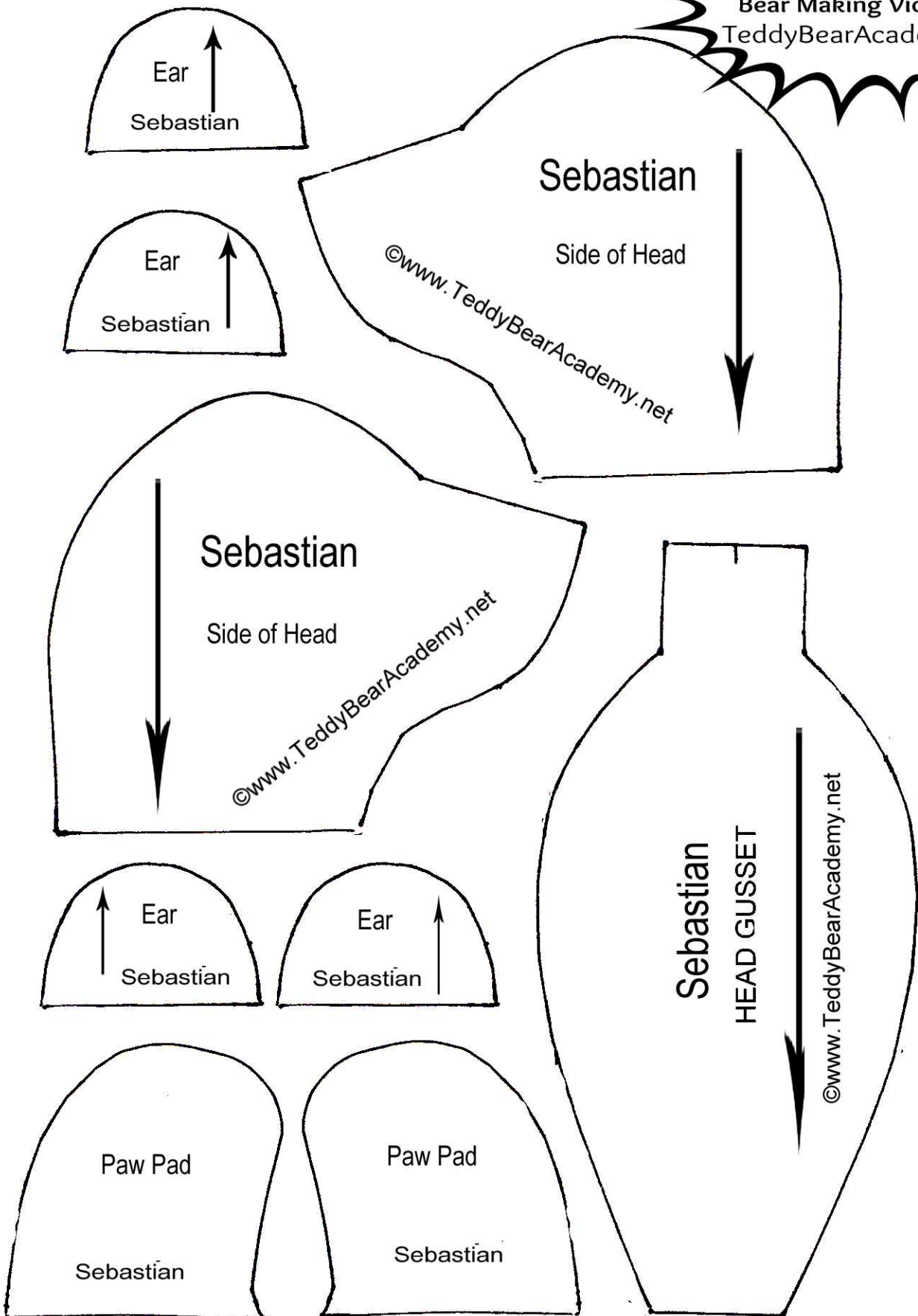
The Ears

Using a 24" length of upholstery thread, whipstitch the ears closed and do NOT cut off the end! Tie off a quick knot to secure it, but leave the thread hanging from each ear. You will use these to attach them to the head.

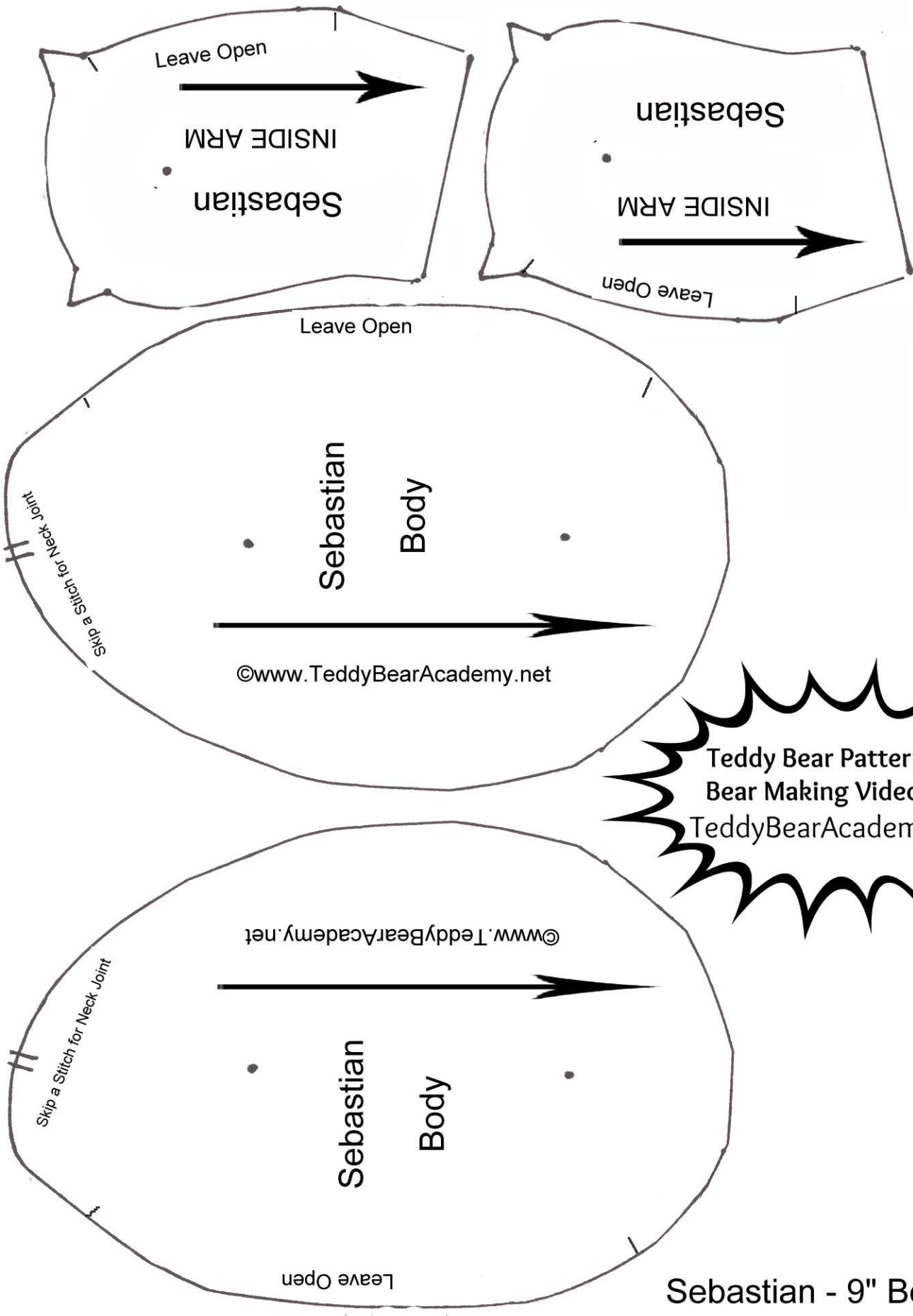
Position the ears where you want them to be and then whipstitch them into place. When you finish at the bottom of the ear, tie a knot and hide the threads just like you did when you closed the seams.

Now you can brush your new friend and accessorize him if you like!

I hope you enjoyed creating your very own bear!

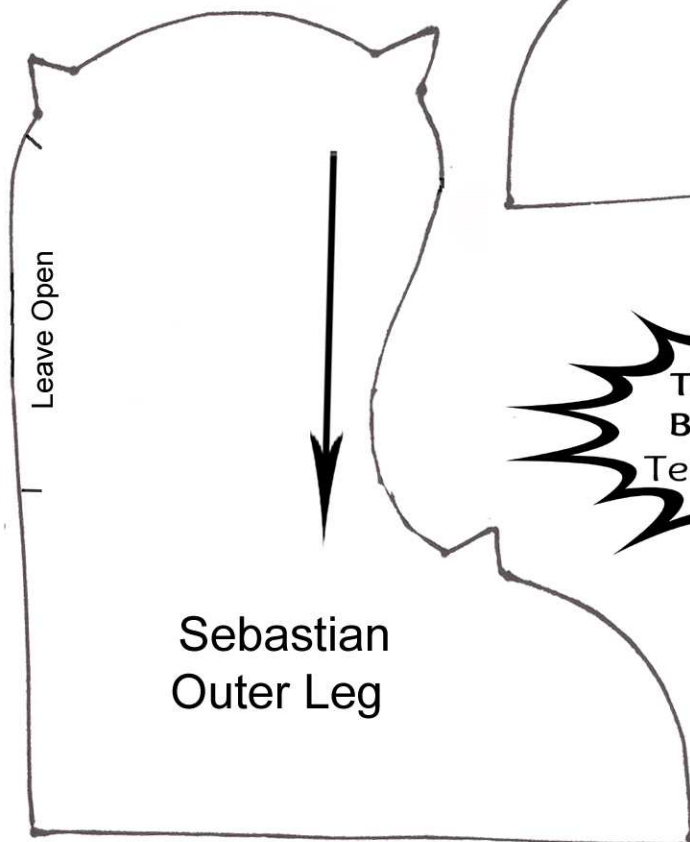
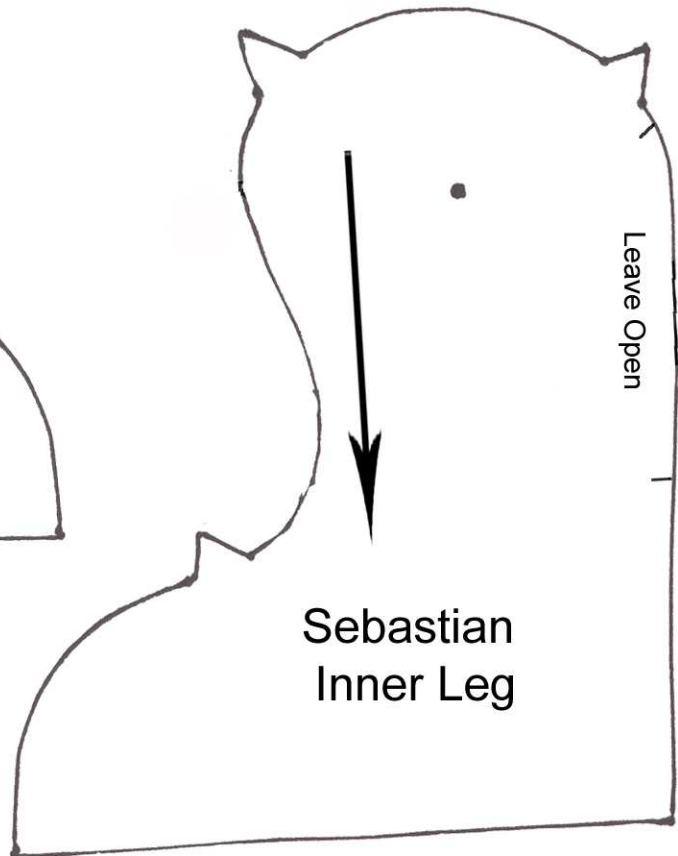
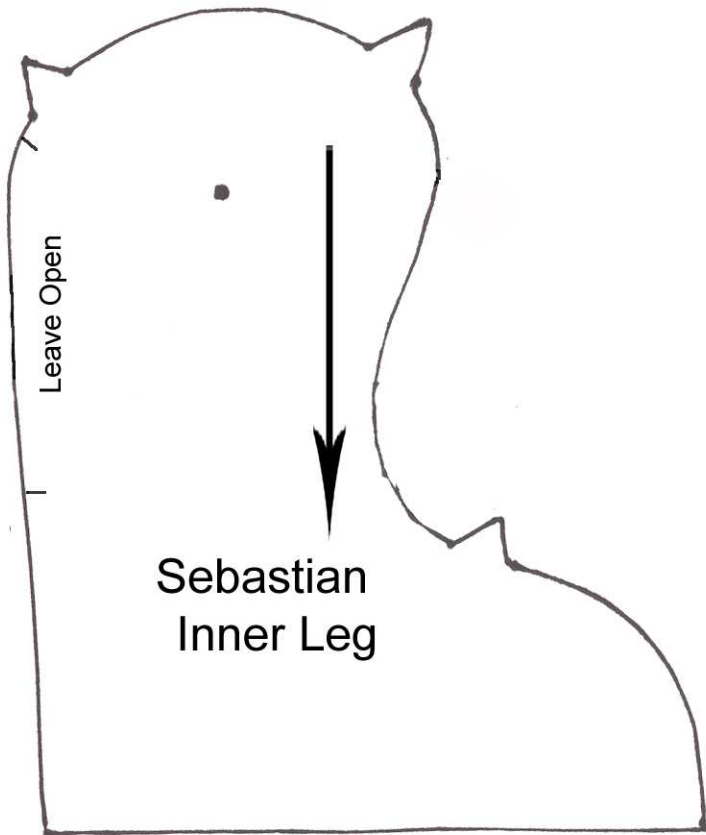


Sebastian - 9" Teddy Bear Pattern



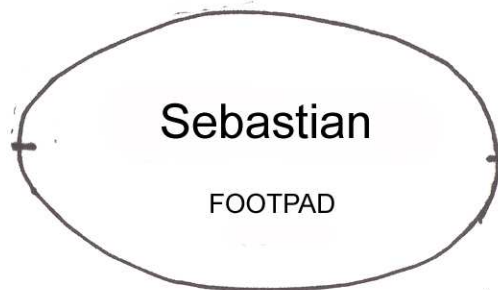
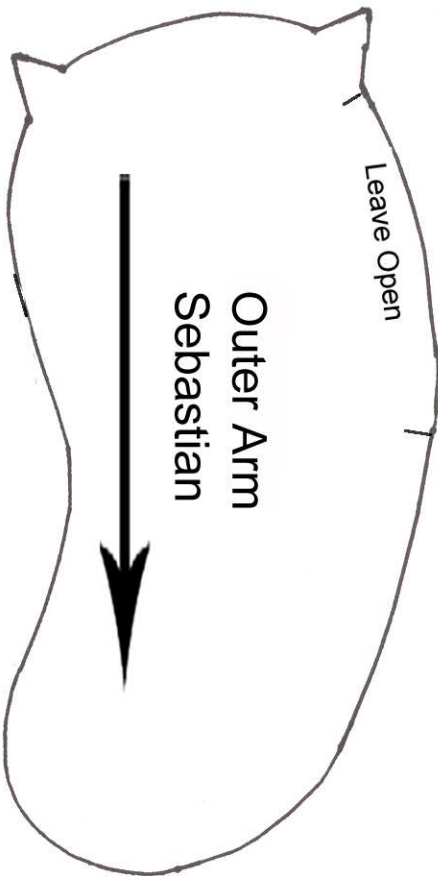
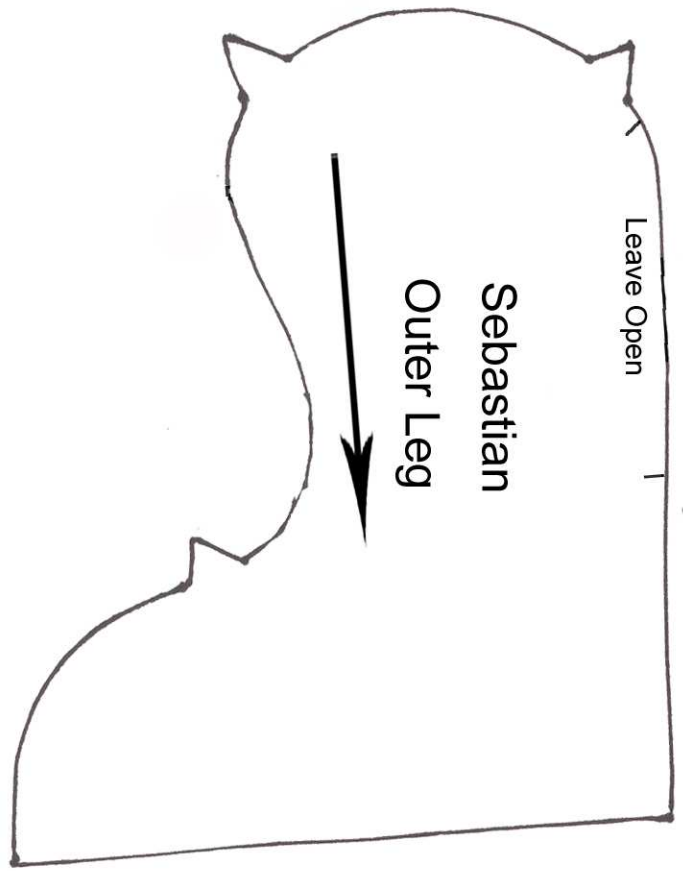
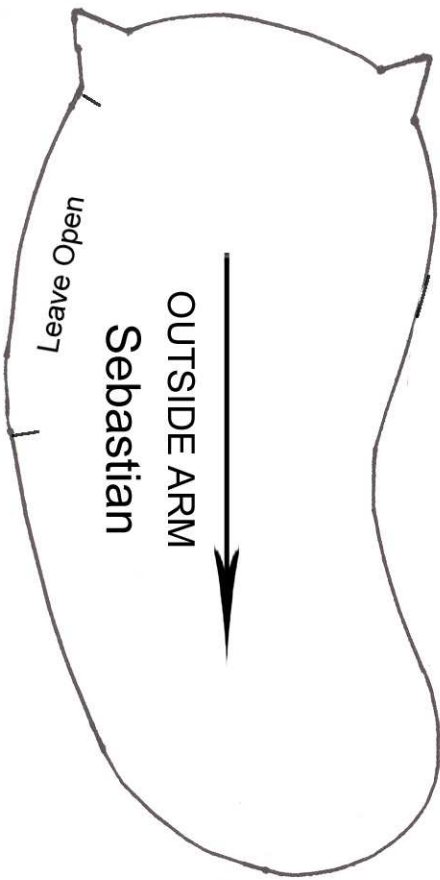
Teddy Bear Patterns &
Bear Making Videos @
TeddyBearAcademy.net

Sebastian - 9" Bear



Sebastian - 9" Teddy Bear

©www.TeddyBearAcademy.net



Sebastian - 9" Teddy Bear

